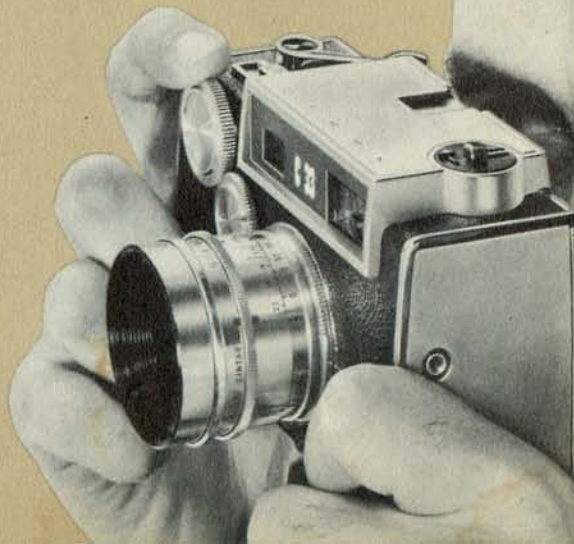




C 33

contents

Functional Parts	3, 4
What Makes a Picture	5
Color-Matic Settings	6
Setting the Shutter	7
Setting the Lens	8
Outdoor Exposures	9
Using the Rangefinder	10
Loading Your Camera	11, 12
Unloading	12
Using the Flash Unit	13, 14
Flash Exposure Guide	15
Changing Lenses	16
Range of Sharpness	17
Specifications	18
Service Information	19
Care and Cleaning	20

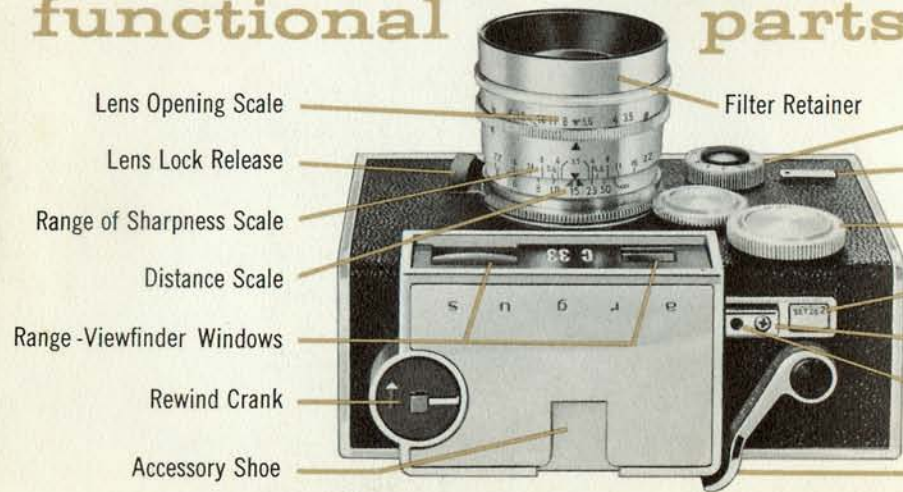


*Your Argus C33 is a fine, precision instrument
—easy to set and use for quick picture-taking
—yet it has all of the features necessary for even
the most unusual subject and lighting.*

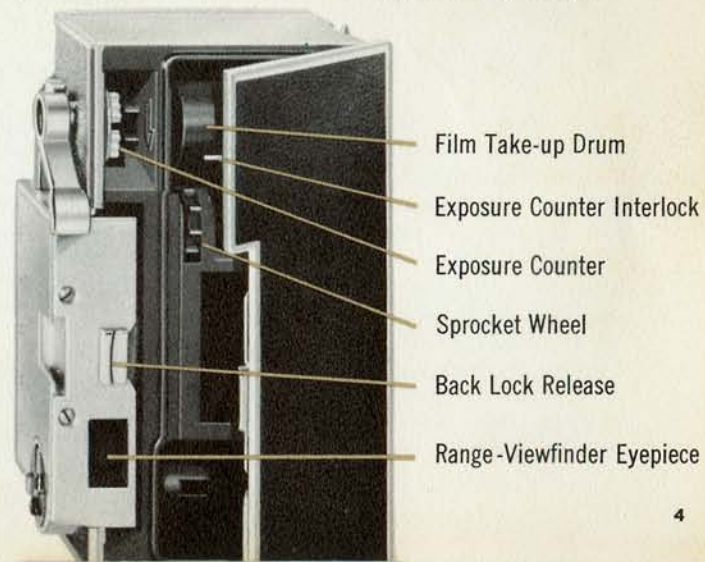
*You will want to read this instruction book over
carefully before you load the first roll of film
so you will not miss an important
picture because you are not familiar with
the operation of the camera. If you're
planning a trip or pictures of a special
event, it is wise to expose a practice roll first.*

*The illustrations in this book may not show the latest minor
changes in product appearance.*

functional parts



These are the important functional parts of your C33. Familiarize yourself with them, as they are referred to throughout this book.



what makes a picture?

First there is the *lens focusing* which gives a clear, sharp image on the film. Line up the rangefinder images by turning the rangefinder dial, and the lens is automatically focused for you.

The next adjustment is the size of the *lens opening* which controls the amount of light passing through the lens. The largest opening has the smallest number.

If this is your first adjustable camera, it may help you to first understand the camera's three simple adjustments which assure good pictures.

Last is the *shutter speed* adjustment which controls the length of time that light can pass through the lens. You will use fast speeds (like 300) for action, slow speeds (like 30) when light is dim.



color-matic settings

Your C33 has a complete range of adjustments for all types of pictures, but if you like, it can be pre-set and used as easily as a box camera. The Color-matic settings on lens opening, shutter, and distance scales will give you correct *outdoor* exposures for average subjects in bright sunlight.

YELLOW MARKINGS are used with Kodachrome.

RED MARKINGS are used with Anscochrome or Ektachrome Daylight Color Films, Kodacolor, or Panatomic-X, Supreme, or similar black-and-white films (ASA 25-50).

The Color-matic lens setting is at 15 ft., but subjects between 9 and 50 ft. will be in focus. For subjects outside this range focus with the rangefinder (see page 10).





ACTION



AVERAGE



LOW LIGHT

setting the shutter



Turn the shutter speed dial until the desired number is exactly opposite the index mark, not in-between. The illustration shows a setting of 60 (1/60). The numbers are fractions of a second.

For action pictures, use 1/125 or 1/300 second.
For average pictures, use 1/60 or 1/125 second.
For low-light scenes, use 1/30 second or lower.

B is used for exposures longer than 1 second. When the shutter is on B, it will remain open as long as the release is held down. Use a cable release and tripod with shutter speeds lower than 1/30 and when taking time exposures.

You set the lens opening by turning the front of the lens to the right or left until the desired number is opposite the index mark. Lens openings may be set on or between the numbers.

The correct lens opening to use may be obtained by (1) using the Color-matic setting, (2) using the Outdoor Exposure Guide on the next page or the flash information on pages 13-15, (3) using the data packed with your film or flashbulbs, or (4), the simplest of all for outdoor pictures, use the Argus Coupled Exposure Meter shown on page 22.

Bright lighting calls for small lens openings, while dim lighting usually needs large lens openings.



setting the lens



BRIGHT



AVERAGE



LOW LIGHT

OUTDOOR EXPOSURE GUIDE

COLOR FILM	SHUTTER SPEED	Bright Sun	Hazy Sun	Cloudy Bright	Cloudy Dull
Ansochrome Daylight Ektachrome Daylight Kodacolor	60	f/11	f/8	f/5.6	f/4
Kodachrome Daylight (or indoor type*)	60	5.6-8	4-5.6	3.5	1/30 at 3.5
Ektachrome Type F*	60	8-11	5.6-8	4-5.6	3.5
Super Ansochrome Day.	125	16	11	8	5.6
BLACK AND WHITE					
Kodak Panatomic-X	60	11	8	5.6	4
Kodak Plus-X Pan	125	16	11	8	5.6
Anso Supreme	125	11	8	5.6	4
Anso Super Hypan	300	22	16	11	8
Kodak Tri-X	300	16	11	8	5.6

*Filters are needed when using indoor-type color film outdoors. See the instructions packed with these films.

Close lens one stop (distance between numbers) from chart setting for *light subjects* (beach and snow scenes). Open lens one stop for *dark subjects* (foliage, dark flowers, animals.)

It is not always necessary to use speeds in this chart. For instance, the chart may recommend 1/60 at f/8. To use 1/125, open the lens one stop to f/5.6 to compensate for the faster speed. If you wanted a speed half as fast (1/30), close the lens one stop (to f/11).

using the rangefinder

The combined viewfinder-rangefinder on the C33 makes focusing easy. Just sight through the viewfinder and turn the rangefinder dial with your finger until the images are aligned as shown in the illustrations below.

A picture can be taken, as well as focused, with the camera in either a horizontal or vertical position. Hold the camera so that the framing best suits the subject.



1 To open for loading, push up back lock and pull back open from top. Release rewind crank by sliding red button away from arrow. Pull crank up until knob lifts out of recess. Place film magazine in camera (long end of spool down). Push down on knob, turning if necessary, until it snaps back into place. Push crank back in.

2 Pull rewind lever (on bottom) down and turn film take-up drum until metal hook is on top. Push rewind lever back up. Place film leader over

drum so one of the perforations on end engages hook. Keeping tension on film, move film wind lever through a *full* stroke, then press shutter release.

3 Film should now lie flat and end should be securely fastened. Set counter dial (see illustration 3) until "set 20" or "set 36" (depending on exposures on your roll) appears. Close camera back. (Back will not close unless counter has been set.)

4 Move film wind lever through another full stroke, press shutter re-

lease, wind film once more, and again press shutter release. Counter will now read 20 (or 36). You are now ready to wind for your first picture.

Counter tells how many pictures remain on roll, and also shows that film is transporting properly. Accidentally moving wind lever more than once will do no harm, as film will only advance one frame between exposures. *To intentionally double-expose, pull rewind lever down while you move wind lever full stroke.* Push rewind lever back up.

When exposure counter reads 0 and you have taken that last picture, *do not* try to wind film any farther or you may double expose the last picture.

Before camera is opened, film must be rewound. Pull down rewind lever on bottom of camera, release rewind crank, then rewind film until counter stops moving. Open back, pull rewind knob up, remove film, and take it to dealer for processing. *Reset counter dial before attempting to close back, and push rewind lever, knob, and crank back in.*

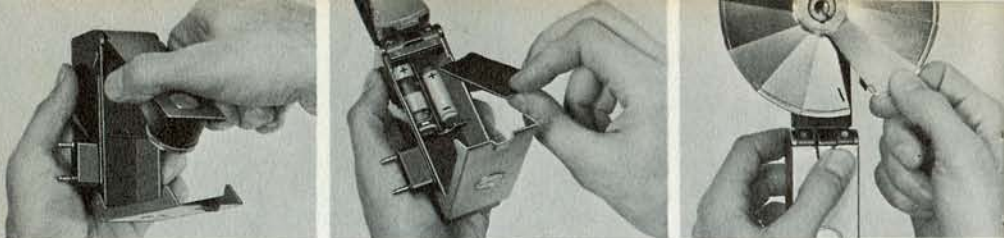
loading

Your C33 will accept any type of 35mm film, color or black-and-white.



unloading





using the flash unit

To install battery, pull metal cover down and lift up on black inner cover. Remove top of battery compartment and install 22.5V battery with (+) positive end up. (see specifications, page 18). Push battery in to seat, replace compartment cover.

With inner cover (which holds reflector) straight up, close metal cover to lock reflector support in place. Open

reflector by turning top blade clockwise—other blades will follow. Place tab on edge of top blade into slot in bottom blade. (Reverse procedure to fold). Plug unit into camera.

Align pins on bayonet-base bulbs with slots in socket. Push bulb in, do not twist. Socket holds bayonet-base or M-base bulbs without adjustment.

Do not have flashbulb in place when plugging unit into camera.

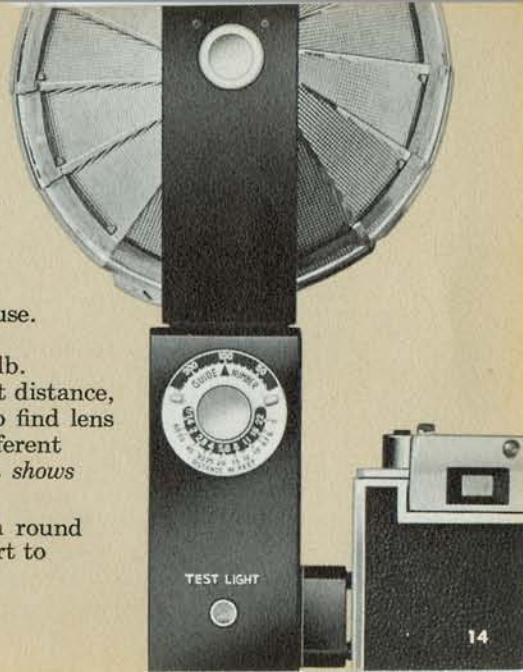
TESTING THE FLASH CIRCUIT—

With flashbulb in place, you can test entire flash unit circuit and bulb with Test Light button. If everything is working properly, the button will flash briefly as it is pressed.

THE FLASH CALCULATOR—Calculator on back of unit shows lens opening to use.

1 Turn calculator dial to *guide number* (see page 15) for your film and flashbulb.
2 Focus with rangefinder to find subject distance, 3 look opposite this distance on dial to find lens opening. Set this on lens. There is a different opening for every distance. *Illustration shows guide number setting of 100.*

EJECTING A USED FLASH BULB—Push round metal button on back of reflector support to eject used flashbulb.



FLASH EXPOSURE GUIDE

FILM	FLASHBULBS	Sylvania M25	Sylvania M2	Sylvania Press 25 and Press M5		
		Use X sync. setting		Press 25 and Press M5	Press 25 and Press M5	Press 25 and Press M5
SHUTTER SPEEDS		to 1/30	to 1/30	to 1/60	1/125	1/300
Ektachrome Type F Kodachrome		130	80	130	100	80
Kodachrome Type F		100	65	100	75	60
Ektachrome Daylight Anscochrome Daylight		Use blue flashbulbs with daylight color film				
		95	90*	95	75	55
Kodachrome Daylight		52	50*	52	42	30
Super Anscochrome Day.		170	160*	170	135	95
Kodak Tri-X		320	220	320	250	190
Kodak Plus-X Pan		230	145	230	175	130
Kodak Panatomic-X		125	85	125	100	75
Ansco Super Hypan		490	340	490	380	240
Ansco Supreme		160	100	160	125	95

*Use this flashbulb (M2B) for outdoor fill-in flash only.

Flashbulbs occasionally shatter, and to avoid any possible damage, a translucent shield may be used over the reflector. Never use flash in an explosive atmosphere.

Set the camera's M-X synchronization selector for the flashbulb you are using. See chart. Guide numbers are intended as guides only, and may be adjusted up or down. Remember to reset calculator to new guide number whenever you change shutter speeds, film, or flashbulbs.

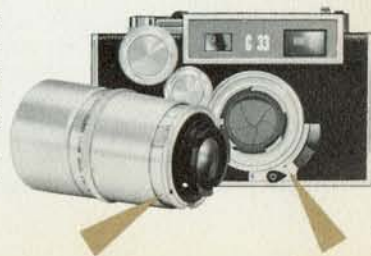
Guide numbers for electronic flash units are furnished by the manufacturer of the unit.

To remove lens, set to any distance greater than 4'. Grasp lens as shown with right forefinger on lens lock release. Press up on release, and rotate lens counter-clockwise, allowing rangefinder dial and lens mount ring to turn. After about 1/8 turn, lens will lift out.



changing lenses

To install any lens, align red dots on camera body and lens mount ring by turning rangefinder. Align red dots on rear of lens. Insert lens so notch in lens' distance scale ring fits over projection on lens mount ring. When seated, rotate the lens clockwise until locked. Never leave camera without lens installed. Avoid changing lenses in direct sunlight.



range of sharpness



Even though you focus on a single subject in your picture, more than that subject will be sharp due to the "range of sharpness" or depth of field of your camera lens. The sharpness range extends both in front of and beyond the point focused upon. It depends on the lens opening and the focusing distance used.

To find the range in a picture, first focus on the principal subject (with the rangefinder). Now look on both sides of the distance scale index mark for the lens opening you are using. Directly below these numbers are the near and far points of sharp focus.

Example: Illustration shows lens opening of f/8 and focusing distance of 15 feet. Below f/8 on each side of the scale are near and far points of sharp focus—approximately 8½' to 50'.

specifications

LENS: 50mm f/3.5 Argus Cintar, color-corrected, coated anastigmat; click-stop lens openings from f/3.5 to f/22; rangefinder-coupled focusing; hyperfocal distance: 46'2" at f/3.5; field: 27° x 40° angular at infinity.

SHUTTER: Behind-the-lens type, 9 speeds from 1 second to 1/300 second, plus B; click-stop settings; cocking action coupled with the film wind; full M-X synchronization.

OTHER FEATURES: Rugged, molded body with brushed chrome trim; hinged metal back; automatic exposure counter with back interlock; single-stroke film wind; double-exposure prevention with intentional release.

FILM SIZE: 35mm cartridge (size 135), 20 or 36 exposure, color or black-and-white film.

LENS ACCESSORIES: Standard lens has built-in retainer which unscrews to hold Series V (1¼") filters and supplementary lens; Series VI (1½") filters can be placed on outside of retainer and held on with a standard Series VI sunshade.

FLASH: Plugs into side of the camera, no wires to connect; folding reflector accepts bayonet-base or M-base flashbulbs; battery-capacitor type with test light and flash calculator; accepts one 22.5V battery—Ray-O-Vac 221, Eveready 505, Burgess Y15, Bright Star 22P, or equiv. Push-button flashbulb ejection.

argus C33

OWNER'S IDENTIFICATION CARD

--	--	--	--	--

CAMERA
SERIAL
NUMBER

OWNER'S
NAME

STREET
ADDRESS

CITY &
STATE

PHONE
NUMBER

Carefully cut this card from the page and keep it in your wallet or other safe place for future reference.

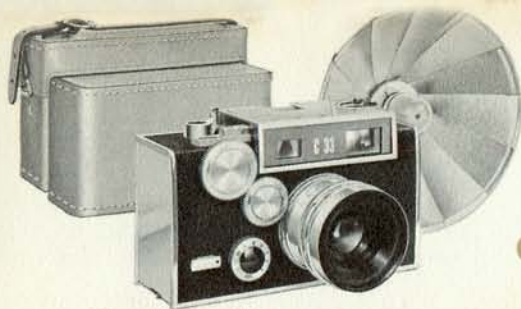
For service, replacement parts, or further information on the operation of your camera, see your local Argus dealer or write to:

CUSTOMER SERVICE DEPARTMENT
ARGUS CAMERAS, ANN ARBOR, MICHIGAN
Division of Sylvania Electric Products Inc.

In Canada, write to:

ARGUS CAMERAS OF CANADA, LTD.
REXDALE, P.O., TORONTO, ONTARIO

When writing about your camera, always mention the camera model number and serial number (found on the bottom).



care and cleaning

Your Argus C33 was designed and manufactured by fine craftsmen. Protect your camera from dust, moisture, and heat. Do *not* store the camera in the glove compartment of your car or any other place where temperature tends to rise or where vibration occurs.

The lens on your C33 is ground, polished, and coated with extreme precision. If it needs cleaning, blow off the dust first, then use a soft lens brush, or wipe it gently with lens cleaning tissue.

Working parts of your camera include fine threads, tiny screws, and precision adjustments. Never force any parts to work if they resist.

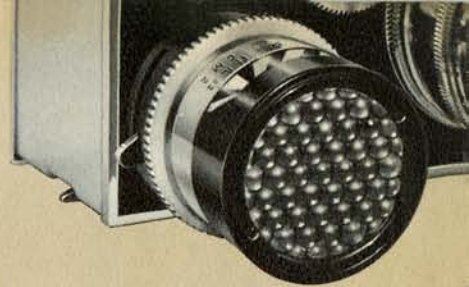
ARGUS C33 ACCESSORY LENSES

Instantly interchangeable Argus Cintar lenses provide the right focal length for every picture. A quick twist and the lenses are removed or installed. The f/4.5 100mm Telephoto and the 35mm Wide Angle Lenses are focused automatically by the rangefinder.



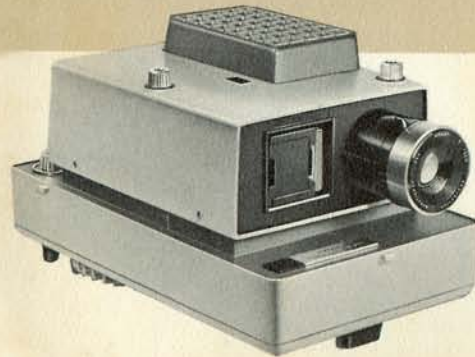
ARGUS COUPLED EXPOSURE METER

It fastens firmly to the camera and couples directly to the camera's shutter. For perfect exposures, just aim the camera and meter at the subject and set the camera lens to the opening shown.



ARGUS ZOOM VIEWFINDER

This zoom-type optical system shows you the view taken in by the 50mm Normal, 100mm Telephoto, and 35mm Wide Angle Lenses. An efficient parallax system tilts the viewfinder so that you see precisely what the lens sees, at any distance. It slips into the accessory shoe of the Argus C33 Camera.



ARGUS PRESIDENT PROJECTOR

The ultimate in fine color-slide projectors. Completely electrical operation lets your slide show run itself. Built-in timer, picture brightness control, power elevation, remote control, and other fine features.

*Lifetime
guarantee*

Your Argus C33 Camera was manufactured, inspected, and tested by skilled craftsmen. It is guaranteed to be free of defects in material or workmanship during its lifetime. If any servicing is necessary because of imperfections in workmanship or materials, your camera will be factory serviced without charge.

Argus equipment which has been damaged, mishandled, or worn from extensive use will be factory serviced at established rates. Equipment purchased as used or rebuilt is not covered by this guarantee.

ARGUS CAMERAS, ANN ARBOR, MICHIGAN
Division of Sylvania Electric Products Inc.

ARGUS CAMERAS OF CANADA, LTD., TORONTO, ONTARIO